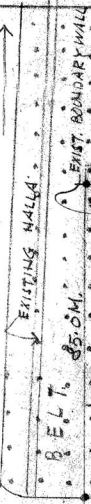


P. S. I. D. C. AREA. (INDL.)

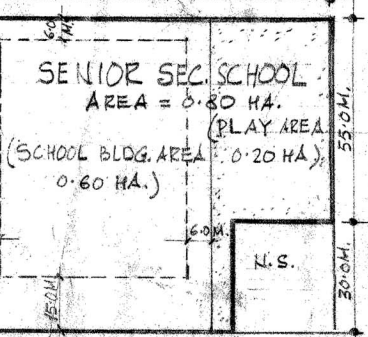
ROAD 80.0 M. R/W

TO EXIST. ALIQUA, UPREA ROAD

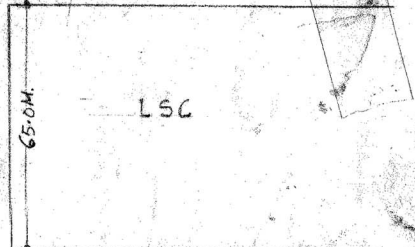


SCIENCE PARK

105.53 M.



ROAD 18.0 M. R/W



SITE PLAN



DELHI DEVELOPMENT AUTHORITY
दिल्ली विकास प्राधिकरण

DETAIL OF AREA.

- TOTAL PLOT AREA = 0.80 HA (8000.0 SQM.)
- AREA FOR SCHOOL BLDG. = 0.60 HA (6000.0 SQM.)
- AREA FOR PLAY GROUND = 0.20 HA (2000.0 SQM.)
- SET BACKS AS SHOWN.
- BUILDING CONTROL- AS PER MPD-2001 PROVISION.

NOTES -

SITE MEASURING 8,000.0 SQM. HAS BEEN ALLOTTED TO JYOTIKA EDUCATIONAL AND WELFARE SOCIETY FOR SENIOR SEC. SCHOOL VIDE L.G. ORDER'S DATED 26.2.2008 AT PAGE 8/NIL FILE NO. F-18(28)2001/IL

Y.P. Bhatla
Y.P. BHATLA, AD/CP

POSSESSION PLAN SHOWING THE SENIOR SEC. SCHOOL SITE ALLOTTED TO JYOTIKA EDUCATIONAL AND WELFARE SOCIETY AT SECTOR 130, NARELA

Scale माप	1:1000	Date दिनांक	25.2.2005	North दिशा	→ N
Dealt by सौंपा	R. K. SAHNI PLS ASST	Y.P. BHATLA (Y.P. BHATLA) नरेश प्रियदर्शन			
Project परियोजना	PARTMO CHAK JP. Diry. Director जन प्रियदर्शन	DR. EKAMALITA Project Director सिवाचरान प्रियदर्शन	Drawing no. चित्रण नं	421	
POSSESSION TAKEN OVER			POSSESSION HANDED OVER		
NARELA PROJECT नरेला परियोजना					